



TIRE STATION

- Combine with your air tank to make the ultimate tire changing station
- Forms a cage around your air tank and protects it from damage
- Works best with 11 gallon air tanks
- Can be used with or without air tank installed
- Durable steel construction
- Long lasting powder coat finish
- The perfect pit accessory

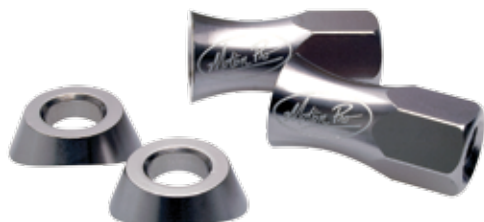
WPS#	List
57-8477	\$149.95

LITE LOC™ RIM LOCK WITH ALUMINUM NUT & BEVELED WASHER



- One piece molded design made from proprietary high-strength nylon composite
- Super light and impact resistant
- Includes the new Motion Pro aluminum LiteLoc™ rim lock nut and beveled washer
- 2.15 weighs only 68 grams (2.4 oz), 1.60 weighs only 35 grams (1.2 oz)
- Unique contoured shape protects inner tube from abrasion and reduces heat
- Unique angled and tapered ribs lock tire securely to rim
- Our testing shows these rim locks are 10 to 20 percent stronger and more impact resistant than cast aluminum rim lock, and only half the weight
- Recommended for use on all off-road motorcycles and any application using low tire pressure
- Patent pending

Rim Size	WPS#	List
2.15	87-10060	\$18.95
1.85	87-10059	17.95
1.60	87-10058	17.95
Nut and Washer	87-10022	14.95



LITE LOC™ RIM LOCK NUT WITH BEVELED WASHER KIT

- Titanium finish with laser engraved logo looks great on any color rim
- Made from 6061-T6 aluminum for optimal lightness and durability
- 12 mm hex head
- Beveled washer protects rim and provides secure fit
- Extra length makes removal and installation quick and easy
- Fits standard rim locks with 8mm x 1.25mm bolt

Description	WPS#	List
12mm	87-10022	\$14.95
13mm	87-10075	19.95

ARMOR RIM STRIP TAPE

- Ultra tough and durable material protects tubes
- Won't shift or move like rubber rim strips
- Self -adhesive backed for easy no mess installation
- Pre cut hole for valve
- Protects inner tube like no other rim strip

Rim Size	WPS#	List
18" - 19"	87-10062	\$7.95
21"	87-10061	7.50



HELMETS
HELMET ACC.
EYEWEAR
APPAREL
RIDER ACC.
PROTECTIVE
RAMP/STRAPS
BIKE ACC.
PIT BIKE
GRAPHIC/SEAT
BODY
LOCKS
MIRRORS
CONTROLS
BAR/GRIPS
LEVERS
CABLES
INTAKE
CARBS/PARTS
AIR FILTERS
OIL FILTERS
EXHAUST
ELECTRICAL
SPARK PLUGS
BATTERIES
CHARGERS
ENGINE
PISTONS
SUSPENSION
DRIVE
CHAIN
SPROCKETS
BRAKES
TIRES
TUBES
TIRE ACC.
CHEMICALS
GAS CANS
TOOLS
TRAILERS
PROMOTIONAL
REFERENCE
INDEX